



2021 SNAPSHOT

FACILITATING THOUGHTFUL, EFFECTIVE GIVING ACROSS BORDERS.



KING BAUDOUIN
FOUNDATION
UNITED STATES

Founding Partner of **Myriad**

LOOKING FORWARD TO AN EXCITING 2022



The year 2021 was an excellent year for KBFUS, with a record number of grants going to hundreds of nonprofits overseas, active in a broad diversity of fields. On our end, the coming year will be marked by renewal and exciting developments. We welcomed Thomas Leysen as our new board chair in January and thanked Peter Piot for his leadership over the past nine years. Additionally, thanks to Myriad -the alliance for

borderless giving- and our strategic partnership with Give2Asia, we now facilitate grants to nonprofits all around the globe. And going forward, our donor and nonprofit partners will be able to count on three new team members, including Senior Advisors for Africa and for Latin America. We look forward to our continued collaboration in 2022!

Jean Paul Warmoes
Executive Director

THOMAS LEYSEN IS OUR NEW CHAIRMAN

Thomas Leysen is Chairman of Umicore and Mediahuis, a publisher of leading newsbrands in Europe. He chairs the Supervisory Board of Royal DSM and is a member of the European Round Table of Industrialists. Thomas has

a keen interest in the arts, and chairs the Rubenianum Fund, which drives the effort to complete the Corpus Rubenianum Ludwig Burchard, the multi-volume catalogue of the oeuvre of Peter Paul Rubens.

2021 HIGHLIGHTS

JANUARY

S&P Global Foundation contributes \$50,000 to **Nema Problema** (Sweden) to help newly arrived young immigrants find employment.

FEBRUARY

University of KwaZulu-Natal (South Africa) receives \$653,762 from its American Friends Fund to support Covid-19 research.

MARCH

Musée national Picasso in Paris, France, home to the largest collection of Pablo Picasso's work in the world, opens an American Friends Fund.

APRIL

Friends of Mersal Foundation distributes \$100,000 to Egypt's **Mersal Foundation** to help disadvantaged patients access quality healthcare.

MAY

Mars Wrigley Foundation contributes \$297,000 to **Foundation for Environmental Education** (Denmark) to educate students about reducing litter.

JUNE

Emily Sano, former Director of San Francisco's Asian Art Museum, and **Olivier Meslay**, Director of the Clark Art Institute, join our Art Advisory Cttee.

JULY

Clean Start, a Kenyan nonprofit working to reintegrate formerly imprisoned women and girls into society, opens the Clean Start US Fund.

AUGUST

Mama Cash (Netherlands) receives \$300,000 from its American Friends Fund to support women's rights initiatives across the globe.

SEPTEMBER

Arolsen Archives (Germany), the world's largest archive on victims and survivors of National Socialism, opens an American Friends Fund.

OCTOBER

Clinic+O (Guinea) receives \$61,000 from its Friends of Clinic+O to provide access to primary healthcare to the country's 13 million people.

NOVEMBER

Parco archeologico del Colosseo, established to safeguard the central archaeological area of Rome, Italy, opens an American Friends Fund.

DECEMBER

The **African Visionary Fund** announces \$1.5 million in grants to nine high-impact organizations led by African changemakers and visionaries.

KEY FIGURES

109 | 637

NEW FUNDS
OPENED IN 2021

TOTAL NUMBER OF FUNDS
UNDER MANAGEMENT

\$79.0 MILLION

RECEIVED IN 2021

\$134.3 MILLION

GRANTED 2019-2021



TOP 5 COUNTRIES GRANTED TO IN AFRICA

1. South Africa
2. Uganda
3. Kenya
4. Tanzania
5. Zimbabwe

TOP 5 COUNTRIES GRANTED TO IN EUROPE

1. Switzerland
2. Belgium
3. Netherlands
4. United Kingdom
5. France

GRANT DOLLARS BY PROGRAM AREA

HEALTH \$14,855,592	HUMAN SERVICES \$11,917,549	PEACE & HUMAN RIGHTS \$7,555,295	ENTREPRENEURSHIP \$6,560,947
EDUCATION \$5,416,869	ARTS & CULTURE \$5,341,733	SCIENCE & TECHNOLOGY \$3,005,053	ENVIRONMENT \$2,985,698

CUSTOMIZED SERVICES FOR U.S. DONORS

FLEXIBLE PHILANTHROPY WITH A GLOBAL REACH

A **Donor Advised Fund** is a flexible tool for individuals, families, and corporate donors seeking to support nonprofit initiatives across the globe. Donors can claim an immediate tax deduction when they contribute to their fund and then recommend grants to favorite charities at their convenience.



Kimberly and Keith Edmunds opened the **HopeFeathers Fund** to structure their giving to local nonprofits serving vulnerable children and communities in Africa. So far, the fund has supported initiatives in Ghana, Uganda and South Africa to boost the education of talented students and train farmers in sustainable agriculture.

A LASTING COMMITMENT TO FUTURE GENERATIONS

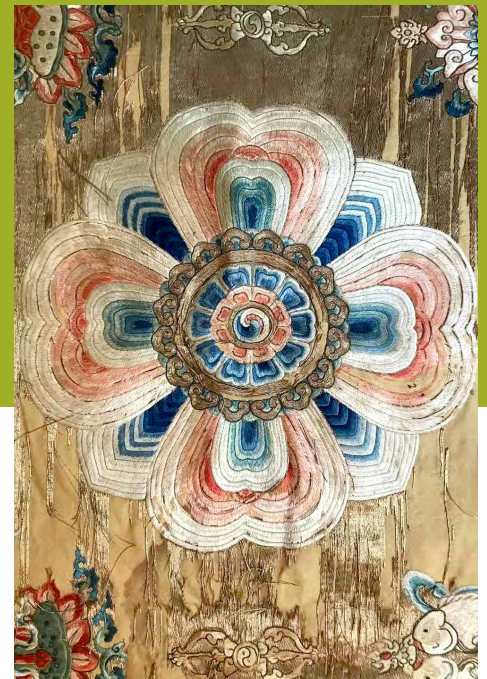
With a **Legacy Fund**, donors can create a charitable legacy for the communities they cherish, anywhere across the globe. A Legacy Fund will make gifts to a donor's preferred charity or cause, in perpetuity or for a specific number of years. Contributions can be made during the donor's lifetime or through a bequest.



An emeritus professor of medieval history, Giles Constable established the **Cluny Medieval Library Fund** to provide continued support to a new research center on the history of the medieval church, based in Cluny (France). Now a picturesque village, Cluny was once the seat of the most powerful monastery in Europe.

GIVING ARTWORKS AND COLLECTIONS TO MUSEUMS OVERSEAS

Through **KBFUS ART**, we help donors navigate the cultural, legal and tax complexities involved in donating art overseas. The artworks we receive are placed in leading museums across the globe. We can work with a donor's preferred institution or identify an appropriate host organization in the country of their choice.



Samuel Myers turned to KBFUS ART to facilitate a gift of a collection of Asian textiles, dating from the 12th to the 19th century, which can now be admired at the **Musée national des arts asiatiques - Guimet** in Paris, France. Pictured: Doorway valance, embroidered silk, China, mid-18th century (detail).

SOLUTIONS FOR FOREIGN NONPROFITS

A COST-EFFECTIVE SOLUTION TO RAISE FUNDS IN THE U.S.

An **American Friends Fund** provides foreign nonprofits with a cost-effective solution to receive tax-deductible gifts from supporters in the United States. With a Friends Fund, organizations avoid the trouble and expense of setting up their own U.S.-based charity. KBFUS handles donor support and back-office administration, including tax receipts.



The **Nelson Mandela University** (South Africa) is a public university with nearly 29,000 students. Building on its motto "change the world", the university is recognized for its leadership in generating cutting-edge knowledge for a sustainable future. With the Friends of Nelson Mandela University Trust, U.S. donors can now support its mission to offer life-changing educational experiences for a better world.

INNOVATIVE LEARNING OPPORTUNITIES

THE ART & SCIENCE OF FUNDRAISING

Pushed by the pandemic, we moved our programming for European and African universities, cultural institutions and other nonprofit organizations online. In 2021, close to 2000 foreign nonprofit executives joined us for fifteen interactive webinars on the **Art & Science of Fundraising**, organized with local partners and featuring some of New York City's most talented fundraisers.

SPOTLIGHTING AFRICAN INNOVATORS

KBFUS spotlights some of its most creative partners from the African continent, including the winners of our Brussels-based parent foundation's **Africa Prize**. We invite these African changemakers to join us for convenings and events hosted by key partner organizations, including the Skoll Foundation and the African Diaspora Network. In 2021, our spotlighting efforts went virtual.

A GLOBAL REACH, WITH MYRIAD & GIVE2ASIA

KBFUS has a new mission statement, which now reads "facilitating thoughtful, effective giving across borders". Indeed, thanks to **Myriad** -the alliance for borderless giving- and our strategic partnership with **Give2Asia**, we now facilitate grants to nonprofits all around the globe. To learn more, visit www.kbfus.org, or reach out to us at (212) 713- 7660.

STAFF

Jean Paul Warmoes, Executive Director
Ellena Fotinatos, Deputy Director
Kady Sylla, Senior Advisor - Africa
Mónica Carrillo Zegarra, Senior Advisor - Latin America
Suzana Erickson, Grants Manager
Elizabeth de Almeida, Gifts Administrator

BOARD OF DIRECTORS

Thomas Leysen, Chairman of Umicore and Mediahuis, Chair of the Supervisory Board of Royal DSM (Chair)
Jendayi Frazer, Former Assistant Secretary of State for African Affairs (Vice-Chair)
Evaristus Mainsah, Vice President, People, eXperience & Technology at Amazon Ads (Secretary)
Maryan Ainsworth, Curator Emerita, European Paintings Department at the Metropolitan Museum of Art
Suzy Antounian, Former Chief Operating Officer of the World Affairs Council of Northern California
Guillaume Bastiaens, Former Vice Chairman of Cargill
Ahmed Fahim, Managing Partner at Alapointe, Former MD at Citigroup and Morgan Stanley
David O'Sullivan, Former Ambassador of the European Union to the United States
Jean-Arthur Régibeau, Ambassador of Belgium to the United States
Brieuc Van Damme, Managing Director of the King Baudouin Foundation

INVESTMENT COMMITTEE

Ahmed Fahim, Managing Partner at Alapointe, Former MD at Citigroup and Morgan Stanley (Chair)
Katrien Carbonez, Partner, Investment Banking Division at Goldman Sachs
Daan Struyven, Senior Economist at Goldman Sachs
Vanessa Vanacker, Managing Director at Morgan Stanley, Fixed Income Division
Jean Paul Warmoes, Executive Director of the King Baudouin Foundation United States (KBFUS)

ART ADVISORY COMMITTEE

Peter Sutton, Former Executive Director of the Bruce Museum (Chair)
Maryan Ainsworth, Curator Emerita, European Paintings Department at the Metropolitan Museum of Art
Katelijne De Backer, Former Executive Director of The Armory Show
Olivier Meslay, Director of the Sterling and Francine Clark Art Institute
Yvette Mutumba, Co-founder and Editor-in-Chief of Contemporary And (C&)
Emily Sano, Former Director of the Asian Art Museum of San Francisco
Anna Swinbourne, CEO of Hill-Stead Museum, Former Curator at MoMA

